



# PHOTO-SESSION



563







Catalogue arranged by Alfred Stieglitz  
Cover designed by Eduard J. Steichen

A COLLECTION OF AMERICAN PICTORIAL  
PHOTOGRAPHS AS ARRANGED BY THE  
PHOTO-SECESSION AND EXHIBITED  
UNDER THE AUSPICES OF THE CAM-  
ERA CLUB OF PITTSBURG, AT THE  
ART GALLERIES OF THE CARNEGIE  
INSTITUTE, PITTSBURG, FEBRUARY  
M D C C C C I V



# The Carnegie Institute

Carnegie Institute was founded by Andrew Carnegie on the second day of March, A. D. 1896. The deed of trust appointed a Board of Trustees composed of eighteen members, with power of perpetuation, and, ex-officio, the members of the Board of Trustees of the Carnegie Library, as said Board may from time to time be composed; and dedicated an annual fund of \$50,000 in perpetuity for the purchase of objects of art for a Department of Fine Arts and Scientific Collections for a museum. The institute is composed, therefore, of two departments, but is closely allied with the Carnegie Library and Music Hall, and occupies the same building. The annual fund for the use of the Department of Fine Arts and the Museum was increased by the donor on November 12, 1901, to \$100,000.

The amount given by Mr. Carnegie for the erection of the main building and the branch buildings connected with the Library was \$1,100,000. A new building-fund of \$5,000,000 was provided by the founder in March, 1903, for an extension to the main building. Pending the construction of this extension, important collections are withheld from exhibition, owing to lack of space.

The Department of Fine Arts is open during the week from 10 a. m. to 10 p. m., and on Sunday from 2 p. m. to 6 p. m., and admission is free to the people. Decoration Day, Fourth of July, and Christmas the Institute and the Library are closed.

Gifts of objects within the range defined by the term "Fine Arts" will be gladly received by the department, and communications relating thereto should be addressed to the Director of Fine Arts, Mr. John W. Beatty.

# The Camera Club of Pittsburg

(Established July 15, 1903)

The Camera Club of Pittsburg is pledged to promote the interests of pictorial photography and to sanction only such work "as shows distinctive evidence of artistic perception and execution." The object of the Society is to aid its members, through monthly exhibitions with constructive criticism, to advance the quality of their work, to promote good-fellowship among its members, and to hold an annual exhibition, open to all pictorial photographers.

The management of the Society is entirely in the hands of a Board of Trustees, composed of the Director and six others, actively interested in the advancement of pictorial photography.

Membership is open to pictorial photographers only. As all members are chosen with regard to their interest in the aims of the Society, and are therefore expected to work in entire sympathy with the Society's object, Rules or By-Laws are deemed unnecessary.

The annual dues to meet current expenses are \$5.00, payable to the Director on or before October 1 of each year. Membership fee is \$10.00.

Membership at present limited to 25. Applications as well as all other communications should be addressed to the Director, Lewis F. Stephany.

## Members

C. DUDLEY ARMSTRONG  
PROF. F. T. ASCHMAN  
W. S. BELL  
FRANCIS E. GAITHER  
ROBERT GREGG  
JAMES B. McCLAY  
NORMAN McCLINTOCK  
J. W. McGRADY  
WILLIAM J. MULLINS

OSCAR C. REITER  
MARSHALL H. RENO  
DAVID ROSSER  
HON. GEORGE SHIRAS, 3D  
R. L. SLEETH, JR.  
LEWIS F. STEPHANY  
\*ALFRED STIEGLITZ  
M. L. STOUT  
V. H. WALTER

---

\* Honorary



# The Photo-Secession

(Founded February 17, 1902)

The aim of the Photo-Secession is, loosely, to hold together those Americans devoted to pictorial photography in their endeavor to compel its recognition, not as a handmaiden of art, but as a distinctive medium of individual expression.

## List of Members

### Founders, Fellows of the Council

JOHN G. BULLOCK . . . . . Philadelphia	EVA WATSON-SCHÜTZE . . . . . Chicago
WM. B. DYER . . . . . Chicago	EDUARD J. STEICHEN . . . . . New York
FRANK EUGENE . . . . . New York	ALFRED STIEGLITZ . . . . . New York
DALLETT FUGUET . . . . . New York	EDMUND STIRLING . . . . . Philadelphia
GERTRUDE KÄSEBIER . . . . . New York	JOHN FRANCIS STRAUSS . . . . . New York
JOSEPH T. KEILEY . . . . . New York	CLARENCE H. WHITE . . . . . Ohio
ROBERT S. REDFIELD . . . . . Philadelphia	

### Elected Fellows

ALVIN LANGDON COBURN . . . . . New York	WM. B. POST . . . . . Maine
MARY DEVENS . . . . . Boston	SARAH C. SEARS . . . . . Boston
W. F. JAMES . . . . . Chicago	S. L. WILLARD . . . . . Chicago

### Associates

PRESCOTT ADAMSON . . . . . Philadelphia	L. M. McCORMICK . . . . . New York
WM. P. AGNEW . . . . . New York	CHARLES H. MACDOWELL . . . . . Chicago
A. C. BATES . . . . . Cleveland	OSCAR MAURER . . . . . San Francisco
A. K. BOURSALT . . . . . New York	WILLIAM J. MULLINS . . . . . Franklin, Pa.
ANNIE W. BRIGMAN . . . . . Oakland, Cal.	CHARLES PEABODY . . . . . Cambridge, Mass.
NORMAN W. CARKHUFF, Washington, D. C.	MRS. CHARLES PEABODY, Cambridge, Mass.
WM. E. CARLIN . . . . . New York	OLIVE M. POTTS . . . . . Philadelphia
S. R. CARTER . . . . . Toronto	HARRY B. REID . . . . . New York
MRS. FANNIE E. COBURN . . . . . New York	C. W. ROEPPER . . . . . Philadelphia
J. MITCHELL ELLIOT . . . . . Philadelphia	HARRY C. RUBINCAM . . . . . Denver
DR. MILTON FRANKLIN . . . . . New York	T. O'CONNOR SLOANE . . . . . Orange, N. J.
HERBERT G. FRENCH . . . . . Cincinnati	WALTER P. STOKES . . . . . Philadelphia
GEORGE D. HEISEY . . . . . Newark, O.	MRS. GEORGE A. STANBERY, Zanesville, O.
HERBERT ARTHUR HESS . . . . . Springfield, Ill.	KATHARINE STANBERY . . . . . Zanesville, O.
SAM. S. HOLZMAN . . . . . New York	LEWIS F. STEPHANY . . . . . Pittsburg
S. STOCKTON HORNOR . . . . . Concordville, Pa.	GEO. B. VAUX . . . . . Philadelphia
J. B. KERFOOT . . . . . New York	MARY VAUX . . . . . Philadelphia
MARSHALL R. KERNOCHAN . . . . . New York	S. S. WEBBER . . . . . Trenton, N. J.
R. KIMBEL . . . . . New York	LILY E. WHITE . . . . . Portland, Ore.
SARAH H. LADD . . . . . Portland, Ore.	MYRA A. WIGGINS . . . . . Salem, Ore.
CHESTER ABBOTT LAWRENCE . . . . . New York	ARTHUR N. WILDE . . . . . Philadelphia
FRED. K. LAWRENCE . . . . . Chicago	

ALFRED STIEGLITZ, Director, 1111 Madison Avenue, New York, N. Y.

Digitized by the Internet Archive  
in 2010 with funding from  
Research Library, The Getty Research Institute

<http://www.archive.org/details/collectionofamer00stie>

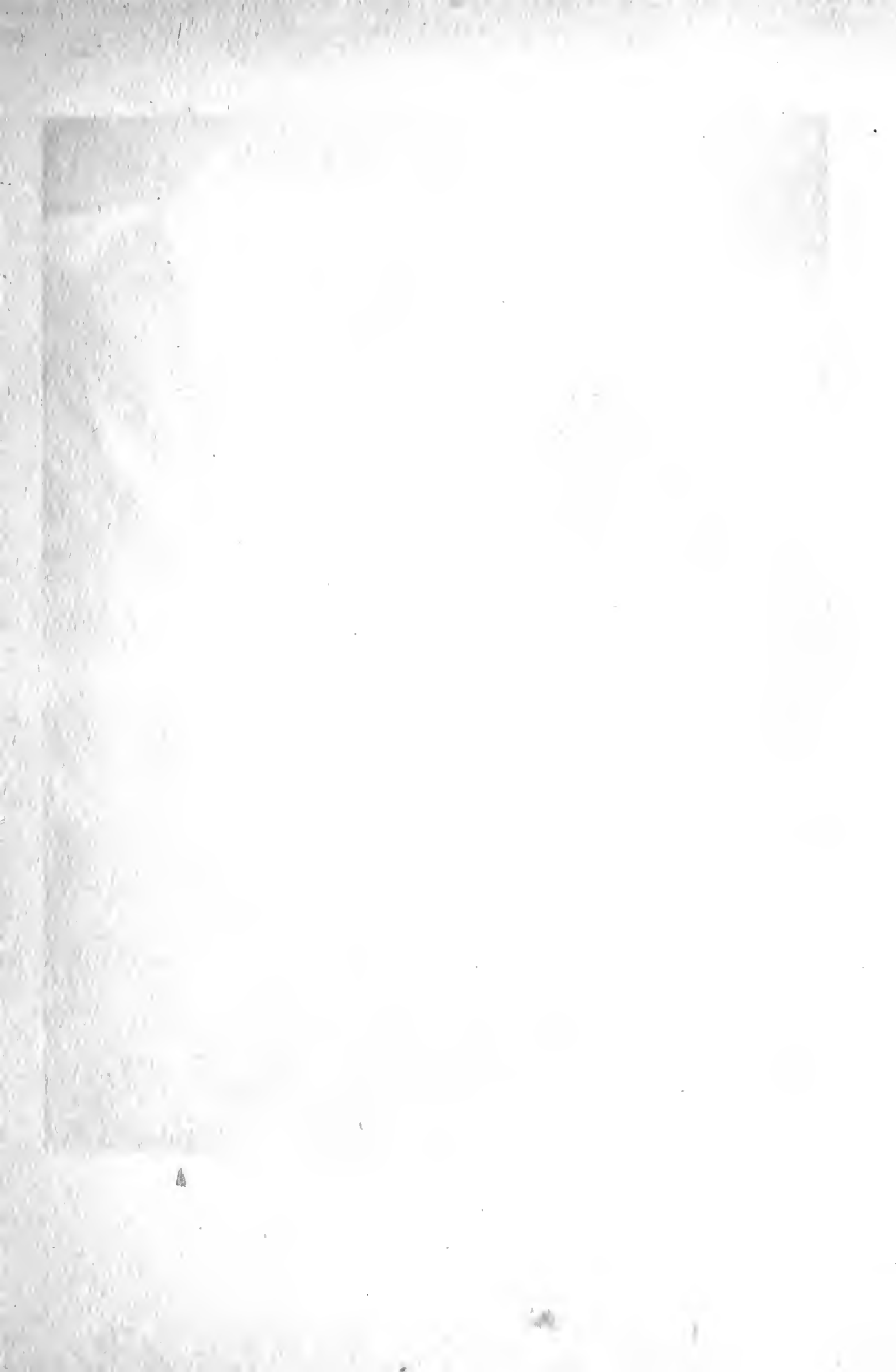
## PLATES.

- I. **Rodin.**  
By Eduard J. Steichen
- II. **John W. Beatty, Jr., and His Sister Katherine  
Elizabeth**  
By Clarence H. White
- III. **The Manger.**  
By Gertrude Käsebier
- IV. **The Hand of Man.**  
By Alfred Stieglitz
- V. **Gables.**  
By Alvin Langdon Coburn
- VI. **'Midst Steam and Smoke.**  
By Prescott Adamson
- VII. **Leonore.**  
By Joseph T. Keiley













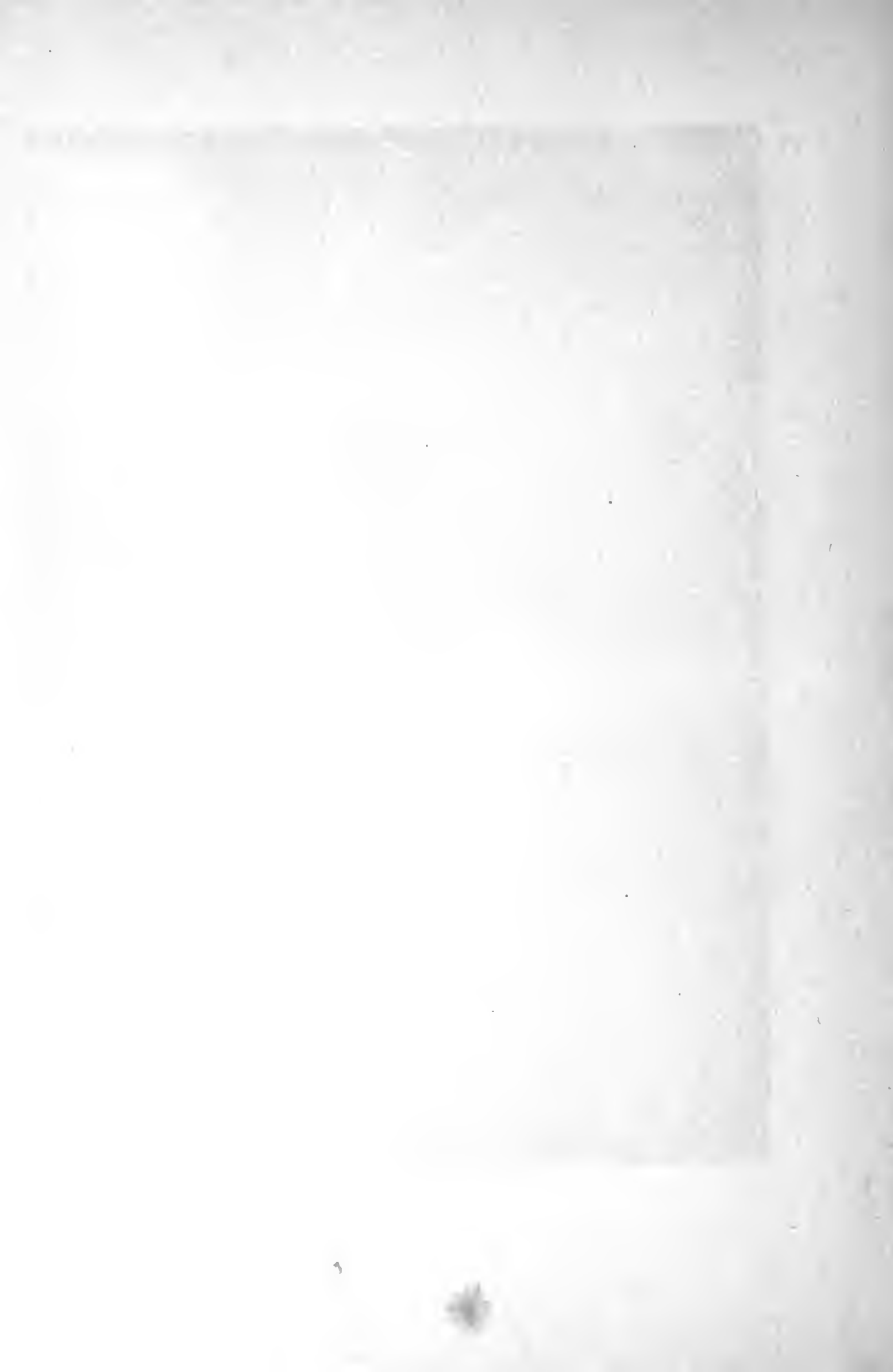


John W. Beaty Jr. · His sister Katherine  
Elizabeth · ~ · Anno Domini 1903 · ~

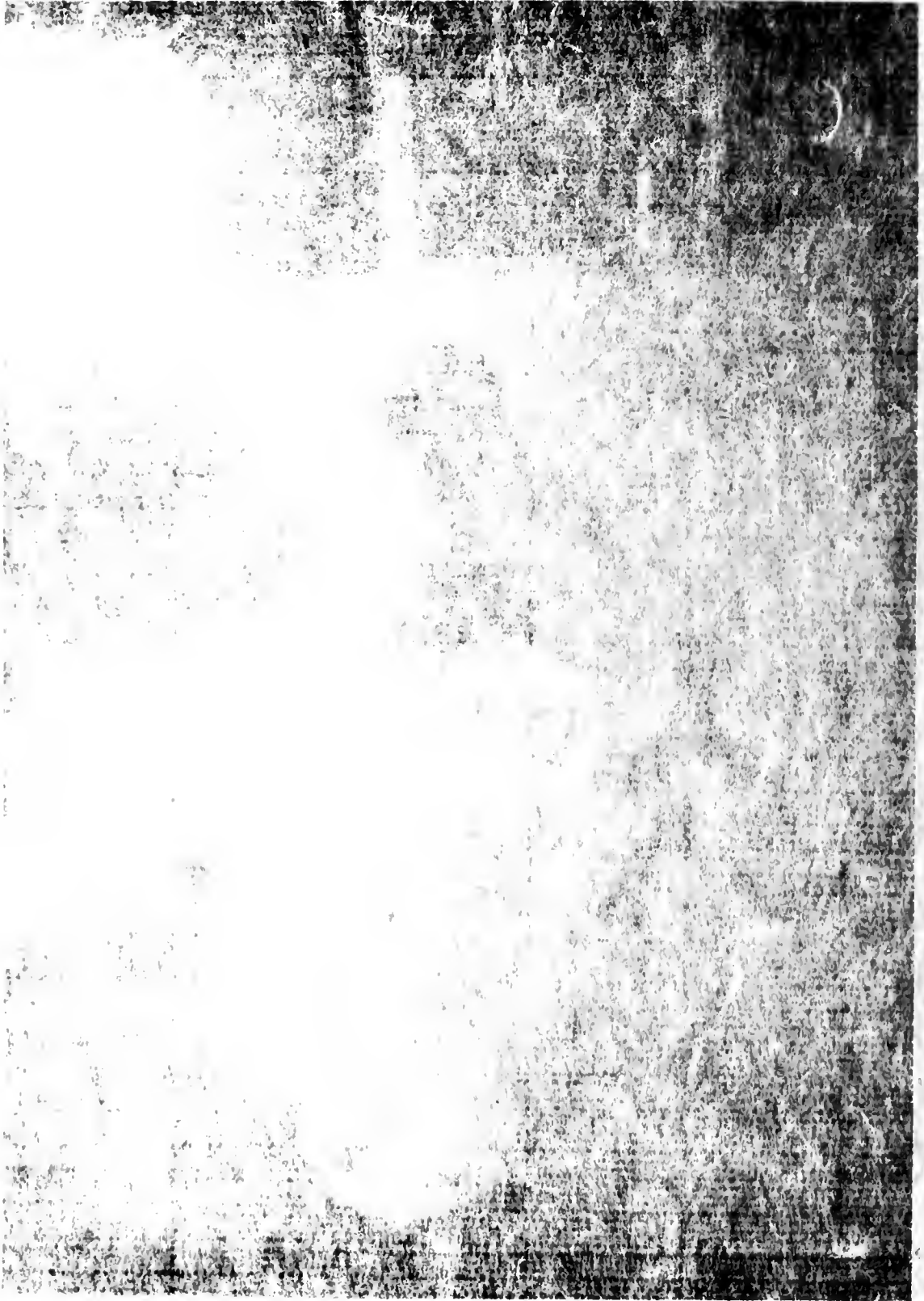


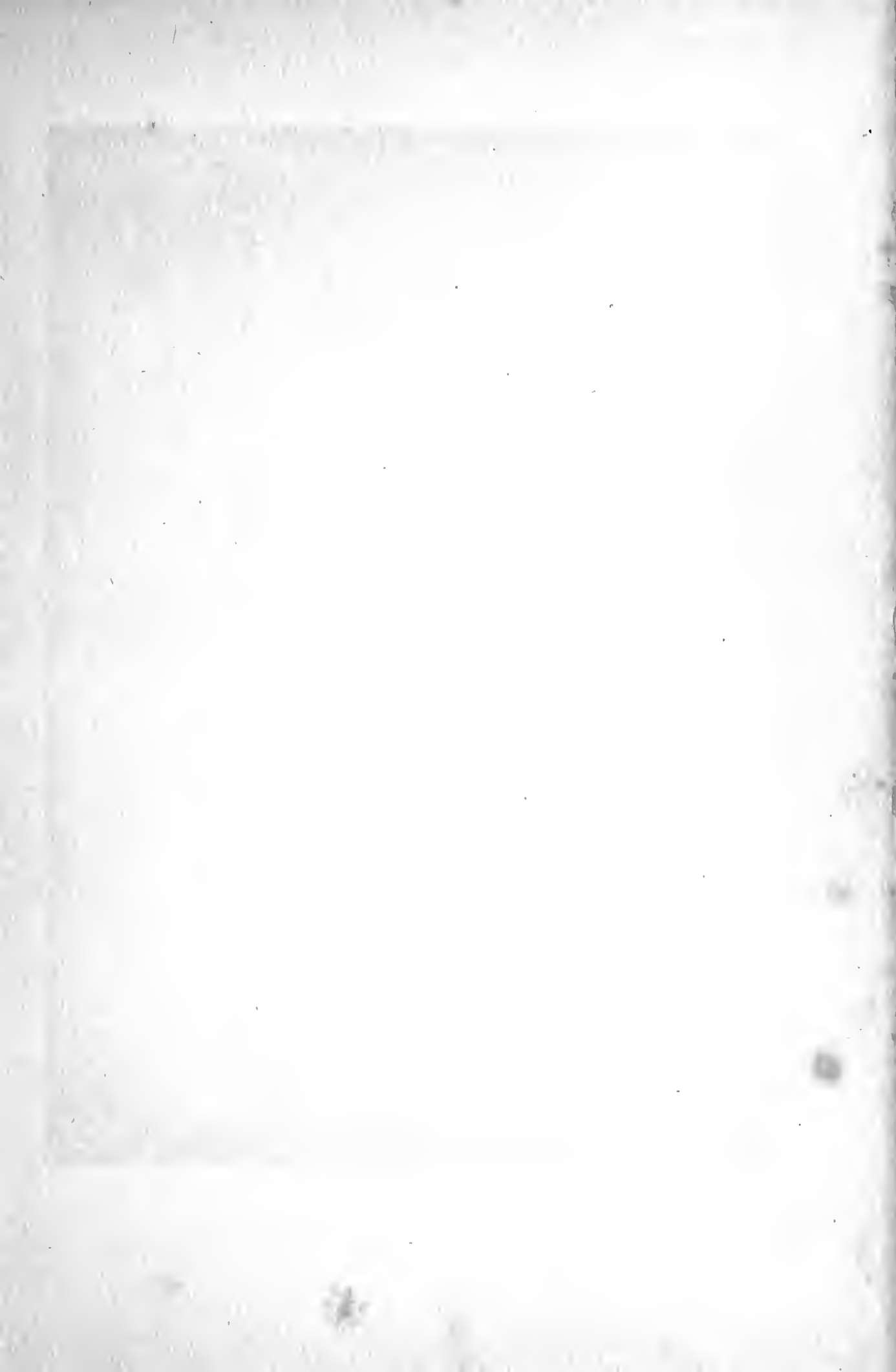
1. N. W. H. ...  
2. ...

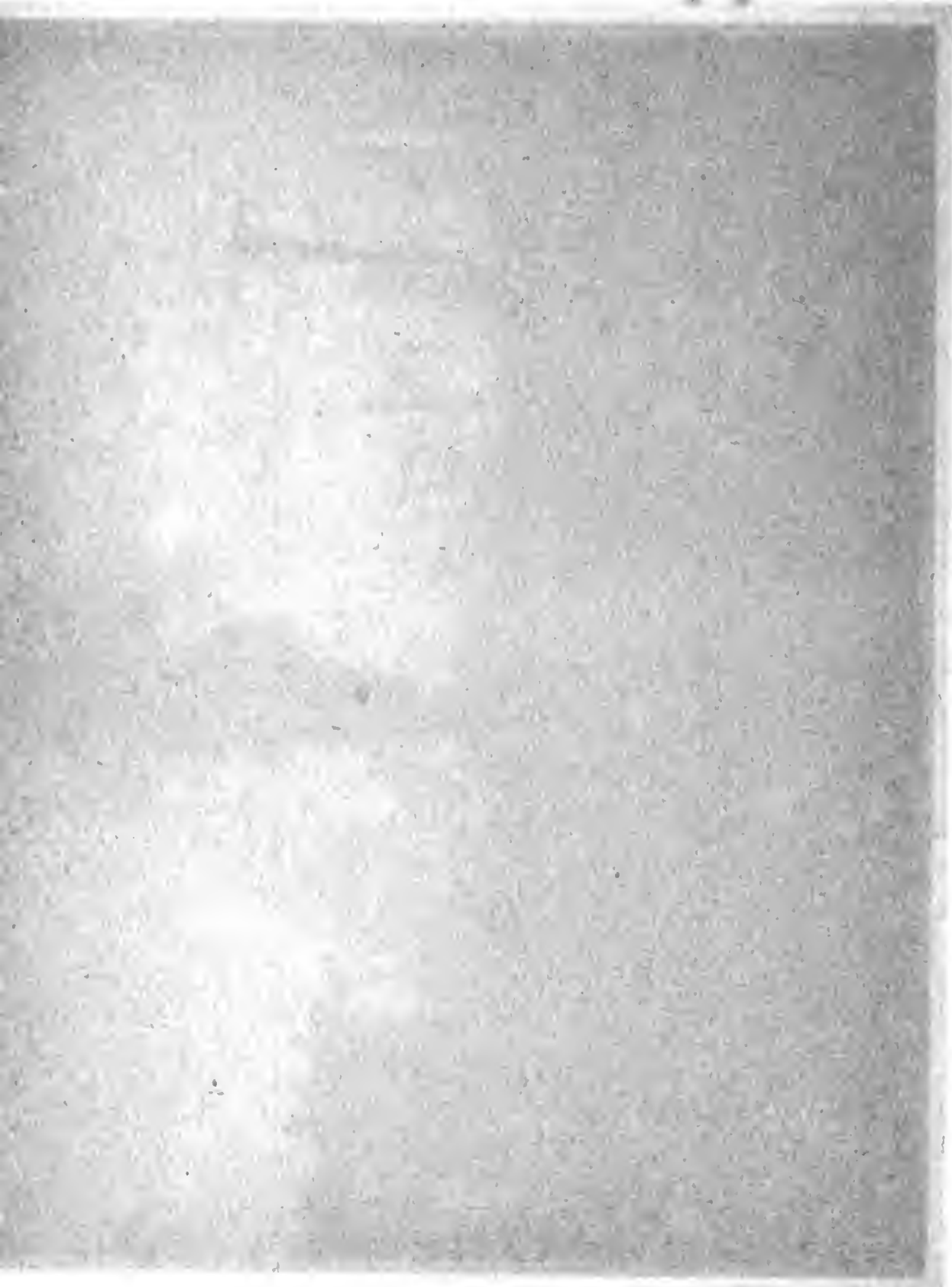














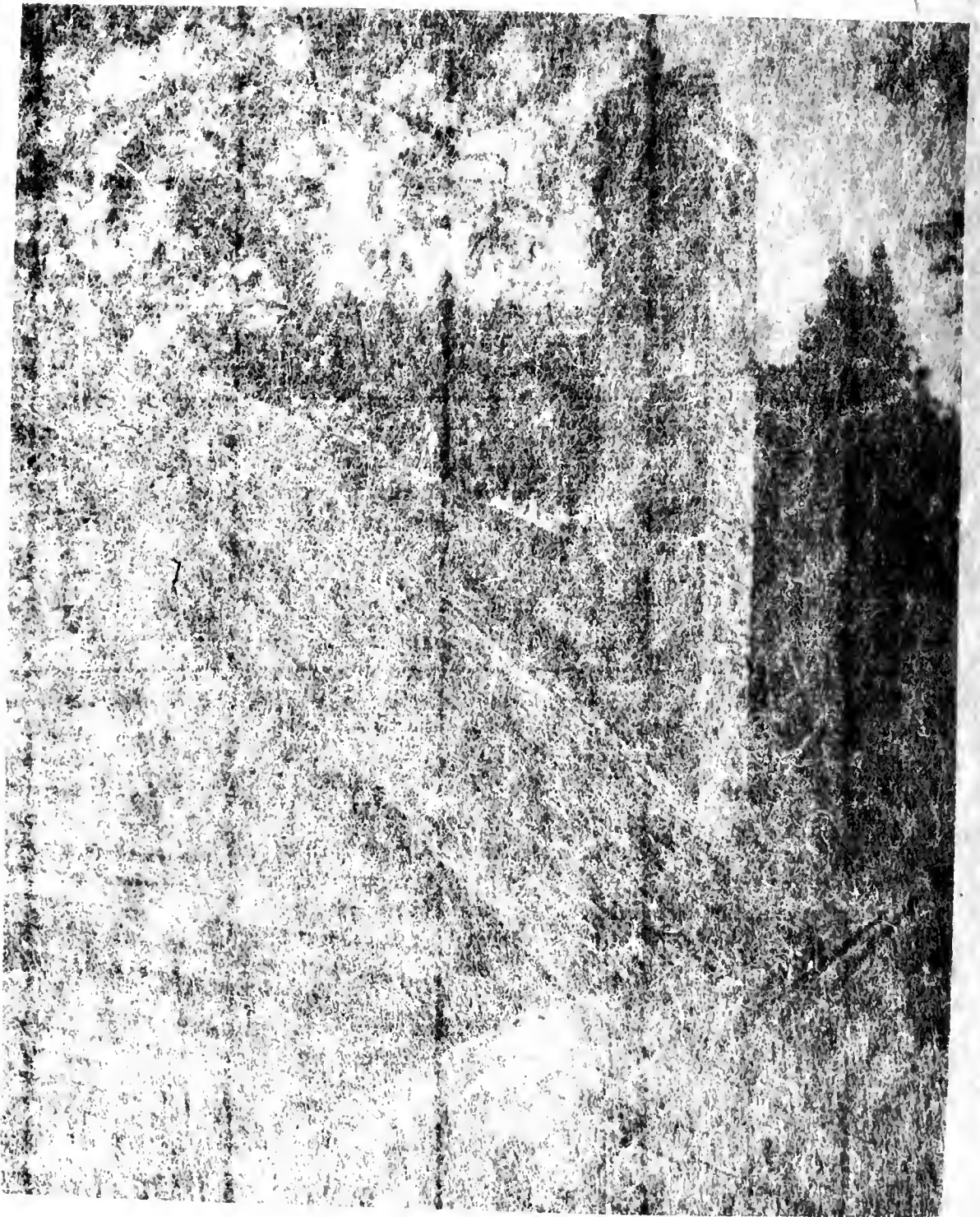




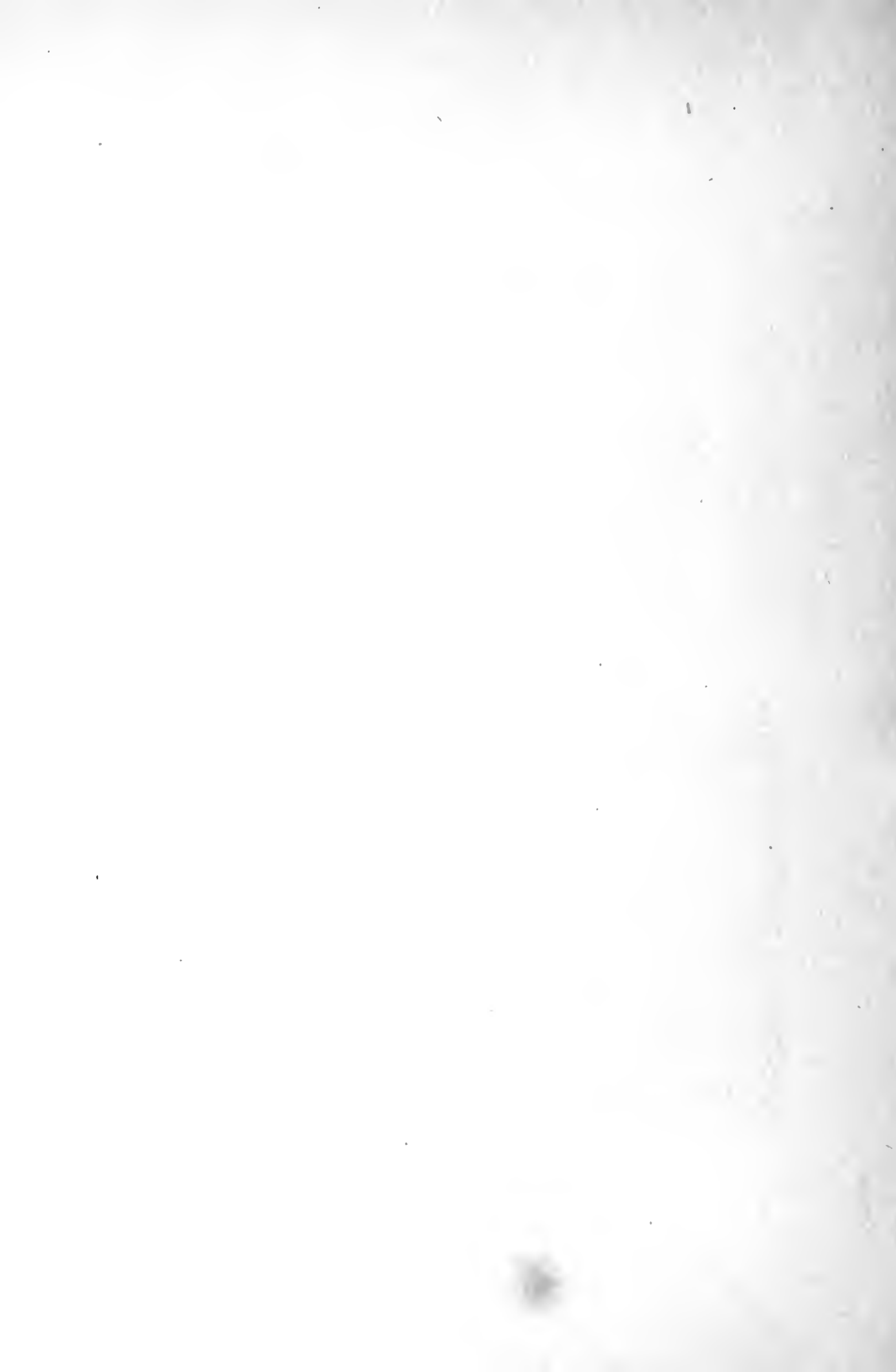






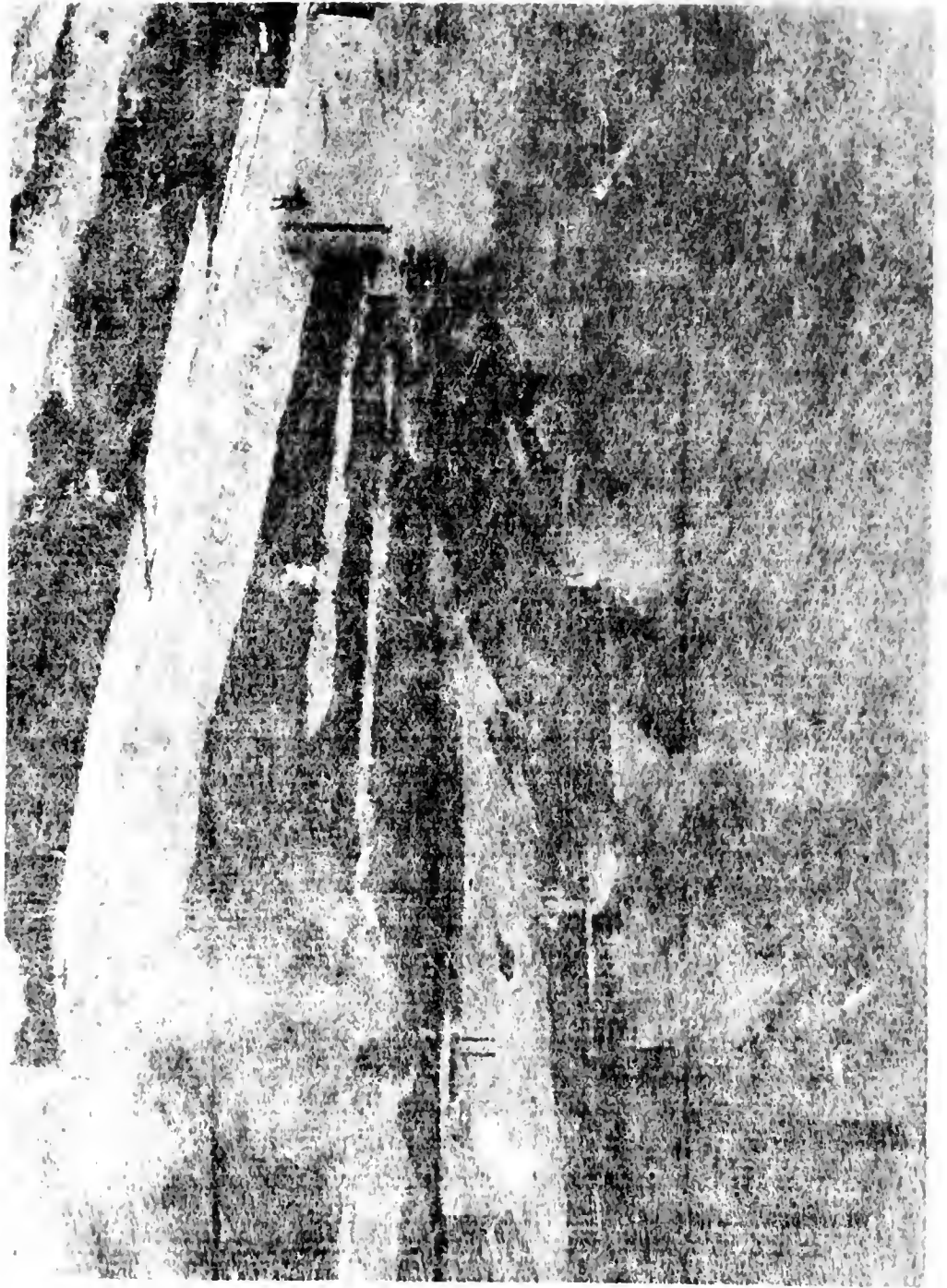


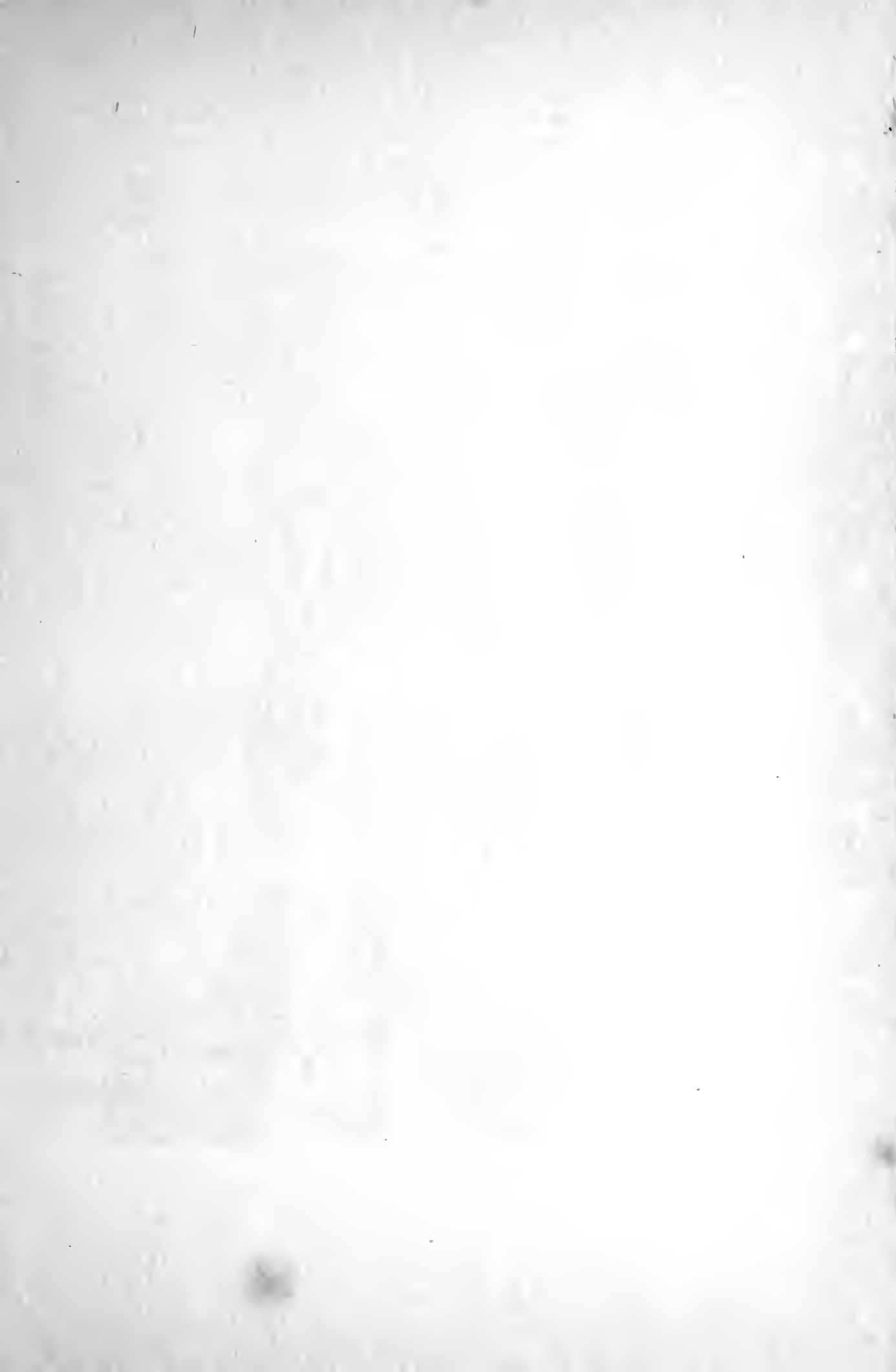




















The foregoing proofs were  
printed from plates loaned  
by Camera Work



# CATALOGUE

## ABBOTT, C. YARNALL

43 South Eighteenth Street, Philadelphia, Pa.

1. Study of a Head
2. The Darker Drink
3. Coryphée
4. The Brook—Winter
5. Study for "The Darker Drink"
6. The Bridge
7. The Pier
8. Outdoor Portrait
9. Sentinels
10. An Andalusian
11. Illustrations from "Madame Butterfly"  
(Courtesy of Century Co.)
12. Illustrations from "Madame Butterfly"  
(Courtesy of Century Co.)

## ADAMSON, PRESCOTT

69 Fisher's Lane, Germantown, Pa.

13. 'Midst Steam and Smoke
14. A Winter Night
15. Snow Storm at Dusk

## ASCHMAN, F. T.

Pittsburg, Pa.

16. The Day is Dying in the West

## BECHER, ARTHUR E.

Milwaukee, Wis.

17. Moonlight
18. Portrait

## BENNETT, JEANNE E.

122 Windermere Avenue, Baltimore, Md.

19. Little Peasant Girl
20. A Misty November Morning
21. Primroses

## BRIGMAN, ANNIE W.

654 Thirty-second Street, Oakland, Cal.

22. Rachel
23. The Mother
24. The Madonna

## C A T A L O G U E

### BULLOCK, JOHN G.

6439 Greene Street, Germantown, Pa.

25. Landscape
26. Landscape
27. The Music-box
28. The White Wall
29. Landscape
30. The Beach

### CARTER, SIDNEY R.

Toronto, Can.

31. A Study

### CLARK, ROSE, AND WADE, ELIZABETH FLINT

321 Hudson Street, Buffalo, N. Y.

32. Out of the Past
33. An "Israel"
34. Doris and Her Mother
35. Miss M. of Washington
36. Annetje

### COBURN, ALVIN LANGDON

384 Fifth Avenue, New York, N. Y.

37. Portrait
38. The Studio on the Hill
39. Gables
40. The Bridge, Ipswich
41. Bell-tower, Santa Barbara Mission
42. The Edge of the Forest
43. Portrait of My Grandmother
44. The Docks, Portsmouth
45. The Dragon
46. Mother and Child—A Study
47. Little Venice
48. Portrait—Alfred Stieglitz
49. Portrait

### DEVENS, MARY

155 Brattle Street, Cambridge, Mass.

50. La Grandmère
51. A Native, Capri
52. The Ferry, Concarneau
53. A Charcoal Effect
54. Portrait
55. On the Giudecca

## C A T A L O G U E

### DYER, WM. B.

Winnetka, Ill.

- 56. From the Clay
- 57. The Model
- 58. Girl of the Plains
- 59. Fraternity
- 60. Fourth of July
- 61. The Model
- 62. The Thistle
- 63. Miss W.
- 64. Study of a Head
- 65. Dinah Morris
- 66. The Observer
- 67. August

### EDMISTON, THOMAS M.

Newark, O.

- 68. Carving the Name
- 69. On the Hillside

### EICKEMEYER, JR., RUDOLF

Yonkers, N. Y.

- 70. A Summer Night
- 71. A Summer Morning
- 72. A Decorative Portrait
- 73. Summer Sea
- 74. Winter
- 75. Winter

### EUGENE, FRANK

At present, Munich, Germany

- 76. Man in Armor
- 77. Adam and Eve
- 78. Portrait—Alfred Stieglitz
- 79. Lady of Charlotte
- 80. Dogwood
- 81. La Cigale
- 82. Nude
- 83. Portrait—Miss Jones
- 84. Song of the Lily

### FRENCH, HERBERT S.

United Bank Building, Cincinnati, O.

- 85. Child at Play
- 86. Study
- 87. Spirit of the Violin
- 88. Jhana

# C A T A L O G U E

## HARRIS, TOM

(Deceased)

89. Portrait—Sadakichi Hartmann

## HESS, HERBERT ARTHUR

Springfield, Ill.

90. Willows  
91. Invocation  
92. Solitude  
93. Summer Idyl  
94. An Idyl  
95. A Study

## HORNOR, S. STOCKTON

Ireton, Concordville, Pa.

96. Fair Weather  
97. Ebb-tide  
98. The Entrance  
99. Decorative Panel  
100. Pippa Passes

## JAMES, WILLIAM T.

4 Board of Trade, Chicago, Ill.

101. The Alley  
102. An April Morning  
103. Christmas Shopping  
104. Breath of Commerce

## KÄSEBIER, GERTRUDE

273 Fifth Avenue, New York, N. Y.

105. The Bat  
106. Labor  
107. Portrait  
108. Father Huntington  
109. Portrait  
110. Harmony  
111. The Manger  
112. Portrait  
113. Portrait—Alvin Langdon Coburn  
114. Portrait of Mrs. W. and Infant  
115. Blessed Art Thou Among Women  
116. Pastoral  
117. Black and White  
118. Sketch  
119. The Kiss  
120. Portrait—Baron de Meyer

## C A T A L O G U E

KÄSEBIER—Continued

- 121. My Neighbors
- 122. Happy Days

### KEILEY, JOSEPH T.

213 Clermont Avenue, Brooklyn, N. Y.

- 123. Zitkala-Sa
- 124. Bacchante
- 125. Indian Head
- 126. The Last Hour
- 127. The Coiffure
- 128. Dusk
- 129. Citizen Fouché
- 130. Leonore
- 131. Portrait—Mercedes de C.
- 132. The Old Pennsylvania Barn
- 133. The Ruin
- 134. Spanish Girl
- 135. Girl with Shawl
- 136. Dust-blown

### KEIPP, MARY M.

Selma, Ala.

- 137. Beyon'

### KERNOCHAN, MARSHALL R.

182 Madison Avenue, New York, N. Y.

- 138. Dusk.

### McCLAY, JAMES B.

Pittsburg, Pa.

- 139. Sheep

### McGRADY, J. W.

Pittsburg, Pa.

- 140. Window Study

### MULLINS, WILLIAM J.

Franklin, Pa.

- 141. The River Path
- 142. Landscape.

### NIEDECKEN, GEORGE

Milwaukee, Wis.

- 143. Portrait—Miss T.
- 144. Portrait—Miss F.
- 145. Portrait—Mrs. W.

## C A T A L O G U E

### POST, WILLIAM B.

Fryeburg, Me.

- 146. Lovewell's Pond
- 147. Intervale—Winter
- 148. Wintry Weather
- 149. Winter Impression

### REDFIELD, ROBERT S.

Wayne, Pa.

- 150. A Marsh Home
- 151. Morning Mist
- 152. Road by the Marsh
- 153. Cabbage Garden

### RENEWICK, W. W.

15 West Twenty-eighth Street, New York, N. Y.

- 154. Nude

### RUBINCAM, HARRY C.

207 Century Building, Denver, Col.

- 155. Lady with Veil

### RUSSELL, MARY M.

Cambridge, Mass.

- 156. Portrait of an English Gentleman
- 157. The Baker of Thun
- 158. Robert
- 159. Lac Lemane Boats
- 160. Misunderstood
- 161. Poplars, Valley of the Rhone
- 162. The Dent du Midi from Leysin
- 163. Kathleen

### SCHÜTZE, EVA WATSON-

344 East Fifty-seventh Street, Chicago, Ill.

- 164. The Rose
- 165. Portrait—Miss B.
- 166. The Student
- 167. Mildred
- 168. Portrait—Harvey White
- 169. Lady Eating Fruit
- 170. Italia
- 171. Study, Miss C.
- 172. May-apple Leaf
- 173. De Cipriani
- 174. Study of Lines

# CATALOGUE

SCHÜTZE—Continued

- 175. A Morning Picture
- 176. Portrait of Miss W.
- 177. A Group
- 178. Portrait of a Young Girl

## SEARS, SARAH C.

12 Arlington Street, Boston, Mass.

- 179. Portrait of Mrs. H.
- 180. Portrait of G. M. S., Jr.
- 181. Helen
- 182. A Study
- 183. Portrait—Julia Ward Howe
- 184. Alice Barclay
- 185. Portrait of Dr. S.

## SLEETH, JR., R. L.

Wilkinsburg, Pa.

- 186. Autumn Landscape
- 187. A Sketch

## STANBERY, KATHARINE SHEWARD

433 Adair Avenue, Zanesville, O.

- 188. Lady Glenmire
- 189. The Elms
- 190. Collie Duncan
- 191. Tiger-lily
- 192. Dusk
- 193. Profile—Ada Vari Voorhis
- 194. Onyx

## STANBERY, MRS. GEO. A.

433 Adair Avenue, Zanesville, O.

- 195. Philemon Stanbery
- 196. Lady with Cup

## STARK, FERDINAND

500 Fifth Avenue, New York, N. Y.

- 197. The Two Swami's
- 198. Portrait

## STEICHEN, EDUARD J.

291 Fifth Avenue, New York, N. Y.

- 199. J. Pierpont Morgan, Esq.
- 200. Rodin

# C A T A L O G U E

## STEICHEN — Continued

- 201. Theobald Chartran
- 202. Moonrise
- 203. The Little Round Mirror
- 204. Portrait of Rodin
- 205. George Frederick Watts
- 206. The Pool — Evening
- 207. Sadakichi Hartmann
- 208. Eleonora Duse
- 209. Maurice Maeterlinck
- 210. P. A. Besnard
- 211. Solitude — F. Holland Day
- 212. An Old Pennsylvania Woman
- 213. Portrait of a Young Man
- 214. Dawn Flowers
- 215. The White Oxen—Twilight
- 216. Parfum des Fleurs

## STEPHANY, LEWIS F.

Cor. Lexington and Reynolds, Pittsburg, Pa.

- 217. Landscape

## STIEGLITZ, ALFRED

1111 Madison Avenue, New York, N. Y.

- 218. Spring
- 219. The Hand of Man
- 220. The Street—Winter
- 221. Spring Showers
- 222. The Flatiron, New York
- 223. Children on Beach
- 224. Icy Night
- 225. Watching for the Return
- 226. Winter, Fifth Avenue
- 227. The Net-mender
- 228. Gossip, Katwyk
- 229. September
- 230. The Incoming Boats
- 231. Katherine

## STIRLING, EDMUND

4517 Kingsessing Avenue, Philadelphia, Pa.

- 232. The New Stitch
- 233. Bad News
- 234. The Stained Gown
- 235. The Drawing Lesson
- 236. A Student of Balliol
- 237. Portrait



## C A T A L O G U E

### STRAUSS, JOHN FRANCIS

31 West Sixty-ninth Street, New York, N. Y.

238. Brooklyn Bridge—Night

### WEIL, MATHILDE

1728 Pine Street, Philadelphia, Pa.

239. Off the Track  
240. Springtime  
241. The Crab  
242. Lisbeth

### WHITE, CLARENCE H.

Newark, O.

243. The Black Bowl  
244. Portrait—Mr. Lisle  
245. Portrait—Miss Felix  
246. Winter  
247. The Deluge  
248. Illustration for "Beneath the Wrinkle"  
(Courtesy of S. S. McClure Co.)  
249. Sunlight  
250. The Finish  
251. Portraits of the Beatty Children  
252. Illustration for "Eben Holden"  
(Courtesy of Lothrop Publishing Co.)  
253. March  
254. Telegraph-poles  
255. The Sisters  
256. Wagon-shed  
257. The Canopied Bed  
258. Man with Violin  
259. Boy with Camera Work  
260. Summer Days

### WIGGINS, MYRA A.

Portland, Ore.

261. At Work  
262. On the Edge of the Cliff

### WILDE, ARTHUR N.

141 East Washington Lane, Germantown, Pa.

263. Landscape  
264. Landscape

### WILLARD, S. L.

Wilmette, Ill.

265. A Memory of Glenview

## C A T A L O G U E

WILLARD—Continued

- 266. Poverty
- 267. Forest Hymn
- 268. An American Girl
- 269. Conspiracy
- 270. Master Coburn
- 271. Portrait Study
- 272. The Veil
- 273. Oenone

## A D D E N D A

**BENNETT, JEANNE E.**

122 Windermere Avenue, Baltimore, Md.

- 274. Soap Bubbles

**COBURN, FANNIE E.**

384 Fifth Avenue, New York, N. Y.

- 275. Evening

**KEILEY, JOSEPH T.**

213 Clermont Avenue, Brooklyn, N. Y.

- 276. Dusk, White Marsh Valley
- 277. Sunrise, Lake George
- 278. Spring
- 279. Study in Flesh Tones

**NIEDECKEN, GEORGE**

Milwaukee, Wis.

- 280. The Sisters

**PEABODY, CHARLES**

Cambridge, Mass.

- 281. Katherine

**PEABODY, JEANETTE B.**

Cambridge, Mass.

- 282. Boy with Bowl
- 283. Child with Lamb
- 284. Pine-trees at Sunset
- 285. Child with Fish-bowl

**POTTS, OLIVE M.**

10 South Eighteenth Street, Philadelphia, Pa.

- 286. Portraits

**RENO, MARSHALL H.**

Pittsburg, Pa.

- 287. November Evening

# CAMERA WORK



AN ILLUSTRATED  
edition-de-luxe quar-  
terly, published and  
edited by Alfred Stieglitz, in the interests of  
Pictorial Photography  
and the Advancement  
of Photography gener-  
ally. Associate Editors: Joseph T. Keiley,  
Dallett Fuguet, and John Francis Strauss.  
A unique publication.

No. I. Käsebier Number . . . six dollars per copy  
No. II. Steichen Number . . . six dollars per copy  
No. III. White Number . . . four dollars per copy  
No. IV. Evans Number . . . three dollars per copy  
No. V. Demachy Number, three dollars per copy

Subscriptions for the year 1904, five dol-  
lars; including registering and packing, five  
dollars and fifty cents. Four issues are in-  
cluded in every subscription.

A few sets of Nos. I, II, III, and IV,  
bound in full leather, twenty-five dollars.

ADDRESS

**ALFRED STIEGLITZ**  
*162 Leonard St., New York*

THE  
PHOTOCHROME  
ENGRAVING  
COMPANY



*Photogravures, Half-tones*

162-166 LEONARD STREET  
NEW YORK

---

Fleming & Carnrick



*Printing in Black and Colors  
from Original Designs*

520 WEST BROADWAY  
NEW YORK

TELEPHONE 3580 SPRING

# 60 Prize Pictures

reproduced as nearly as possible in the original colors of the photographs, in half-tone, bound in an elegant Souvenir Portfolio of 64 pages, on heavy plate paper, with Ten Papers on Ten Phases of Photography, by ten of the most prominent photographers,

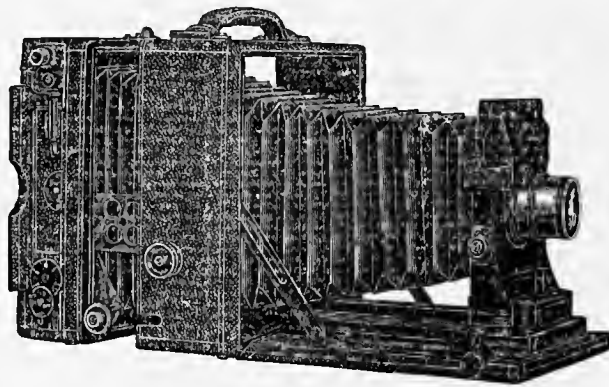
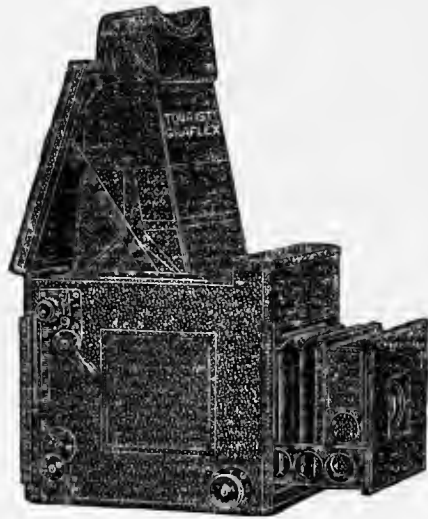
## 25 Cents

These 60 pictures received the Judges' Awards in our \$3,000.00 Competition just closed. They are the pick of the thousands of prints from every part of the world and represent the highest attainments in every line of photography. Every one interested in photography should not fail to have this elegant portfolio, as, aside from its artistic value and the pleasure of owning such a collection of pictures, it is a symposium of good lighting, good composition, good pictorial photography. It contains no advertising matter. We simply want our friends to see the work the best photographers are doing with our lenses in all parts of the world.

*Send 25 cents, Stamps or Coin*

**Bausch & Lomb Optical Co.**  
Rochester, N. Y.

# Graflex & Graphic are the *Best* in *Cameras*



Ask your dealer or write to

**The Folmer & Schwing Mfg. Co.**

407 Broome Street, New York City

# EASTMAN'S SEPIA PAPER

gives beautiful, warm brown shadows and half-tones, with mellow, creamy high lights. Especially effective when used with broad, sketchy negatives.

EASTMAN KODAK CO.

*For sale by all dealers.*

Rochester, N. Y.

Developer-poisoning is no Small  
Matter

## EDINOL

Has yet to have a single case of poisoning recorded against it. In addition to this important factor of personal safety, it has no superior as a developer.

Farbenfabriken of Elberfeld Company  
40 Stone Street, New York, N. Y.

To be had from all supply dealers or directly from ourselves.

No matter how proficient you may be in the art of Photography, that proficiency may be greatly increased by the use of a

**GOERZ**

## Double Anastigmat Lens

*Series III. f 6.8*

*Series I B. f 4.5—f 5.5*

Many of the pictures in this exhibition were made with one of the above lenses.

Send for new illustrated catalogue—just out.

**C. P. GOERZ OPTICAL WORKS**

52 Union Square, East, New York

### *The* SEED NON-HALATION ORTHO PLATE

PORTRAIT AND  
LANDSCAPE

A HIGH-GRADE PLATE, ABSOLUTELY UNIFORM IN QUALITY

**T**HE SEED Non-halation Ortho Plates are daily gaining new adherents. Given a trial no other brand will again satisfy.

These claims are substantiated in the following, written to us by the Editor of Camera Work:

“For three years I have used the Seed Non-halation Ortho Portrait-plate for virtually all my serious work, including so-called snapshots. In my opinion it is the most perfect all-around plate in the American market to-day. For that reason— together with its absolute reliability —I am using it as the standard by which I test all other plates.”



SPECIAL

85-B  
2354

